



**BUILT TO PERFORM.
BUILT TO PROTECT.**

INSTALL IT RIGHT. PROTECT WHAT MATTERS.

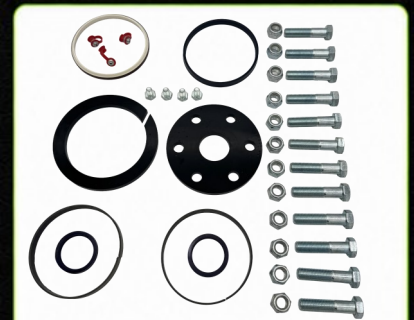
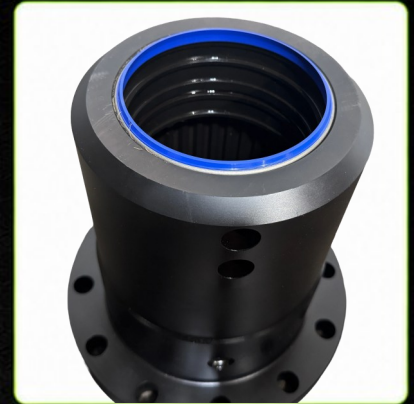
**425 MANUFACTURING
SEAL KIT INSTALL TOOL**

425 P/N 3966

Precision installation tool for EPIROC® wiper seals. Engineered to simplify installation while preventing seal damage and reducing downtime.



**THE COMPLETE SOLUTION
ENGINEERED FOR SAFE,
ACCURATE SEAL INSTALLATION.**



**425 P/N 3377- SPARE PARTS SET DHR6H
SUBSTITUTES EPIROC® P/N 4250 2760 53**



 <p>PROTECTS SEALS Helps prevent cutting, rolling, or damaging new seals during installation.</p>	 <p>SAVES TIME Speeds installation and reduces downtime, keeping your equipment moving.</p>	 <p>PRECISION FIT Designed for perfect seal alignment and repeatable installation results.</p>	 <p>IMPROVES RELIABILITY Helps extend seal life and equipment uptime by ensuring proper installation.</p>
--	---	--	---

COMPATIBLE COMPONENTS

ADAPTER HOUSING



**425 P/N 2095
(EPIROC® P/N 4350 2650 06)**

WIPER SEAL



**425 P/N 3377-10
(EPIROC® P/N 0665 9235 01)**

INSTALL TOOL



**425 P/N 3966
(For use with the
above components)**



425 Manufacturing, Inc.
Rockford, Illinois USA

(815) 636-5810
sales@425mfg.com

www.425mfg.com

AFTERMARKET SOLUTIONS FOR DRILLING PERFORMANCE

BREAKOUT TABLE JAWS | WIPER SEALS | DUST POT COMPONENTS
HOSE KINK PREVENTION SYSTEMS | DRILL STEEL SUPPORTS